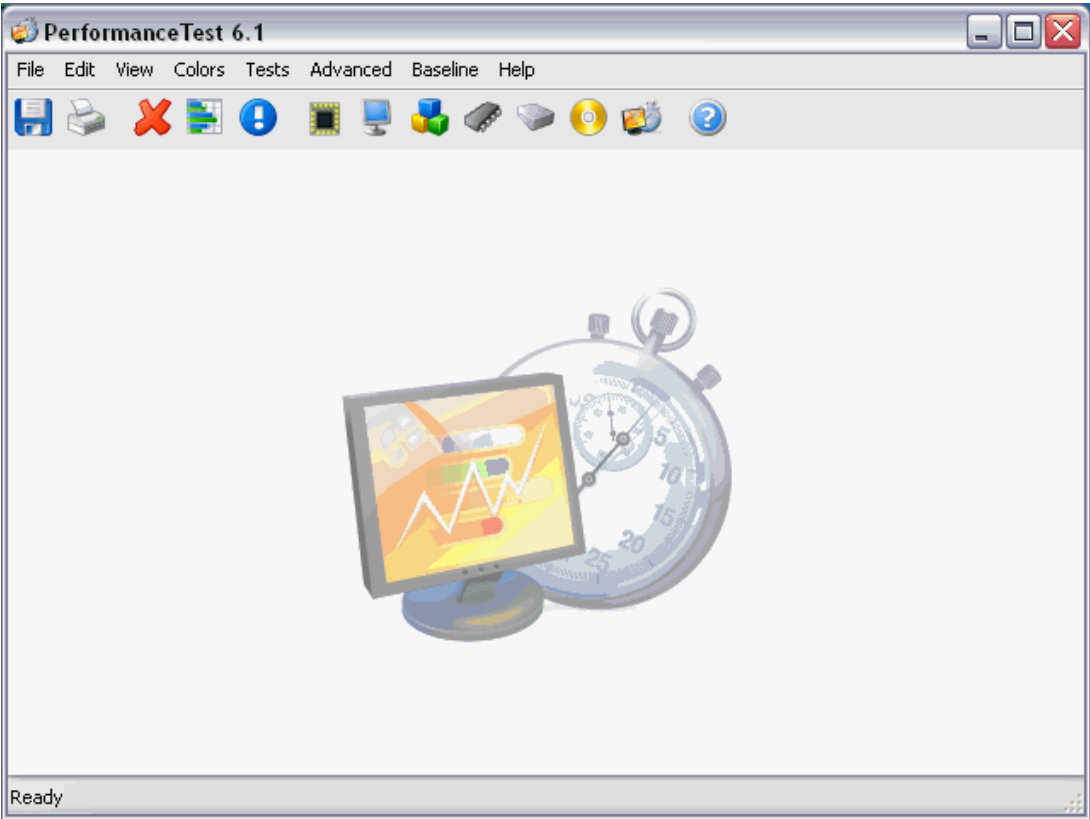




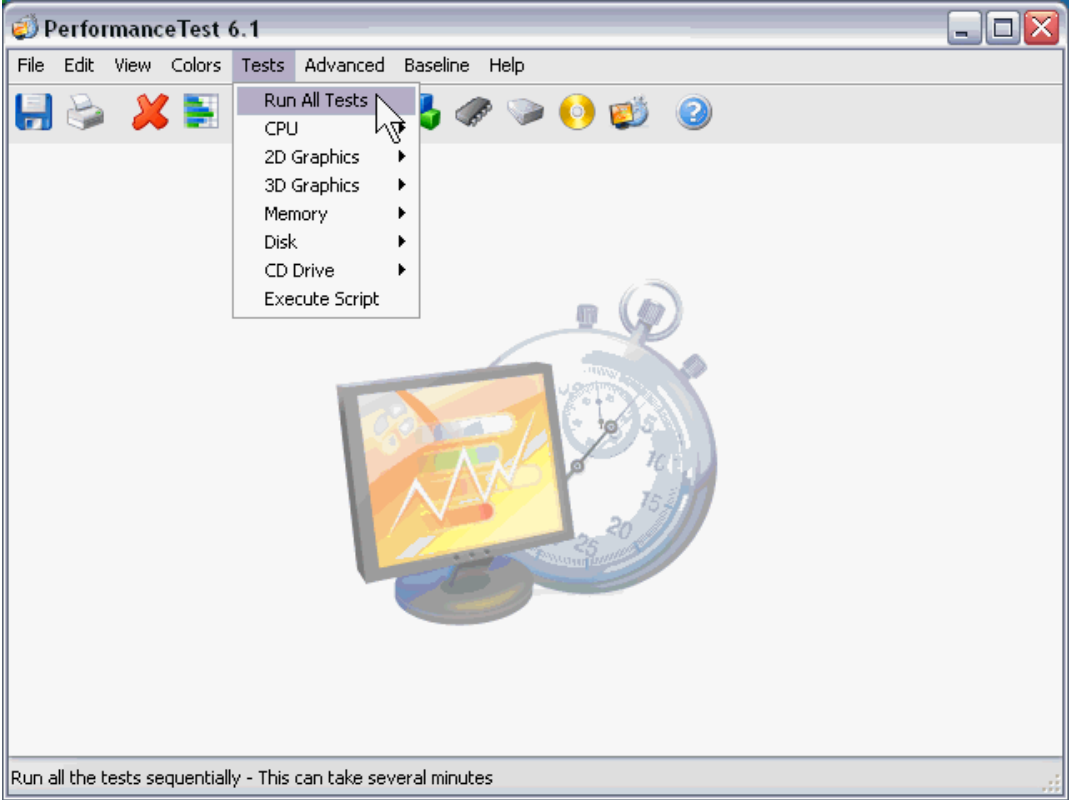
Using Passmark Performance Test

After down-loading and installing the Passmark Software... When opening the program you should now see the below screen.

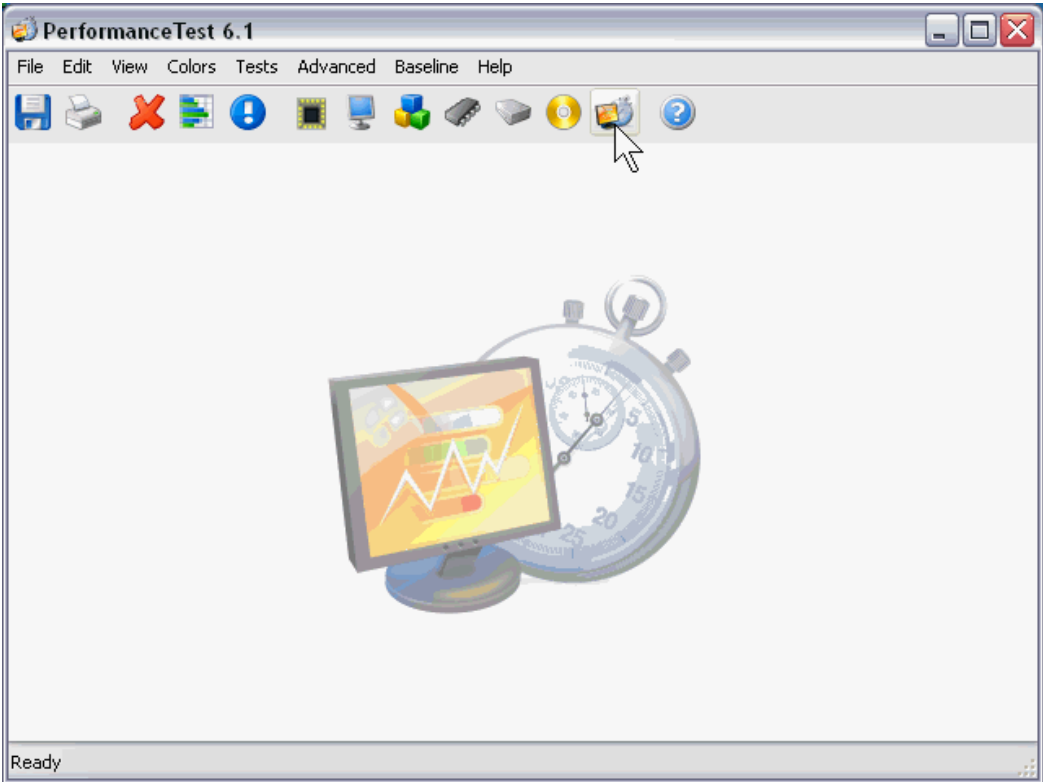


Building a Base-line File

A Base-line file of your computer will now be built. To build your personal Computer Base-line file requires selection of “Run All Tests” command. This command can be accessed by either the drop down menu or the tool bar button. Your computer will now be run through a bank of tests that include Computer, Graphics, Video, Memory, CD, imaging and a host of others.

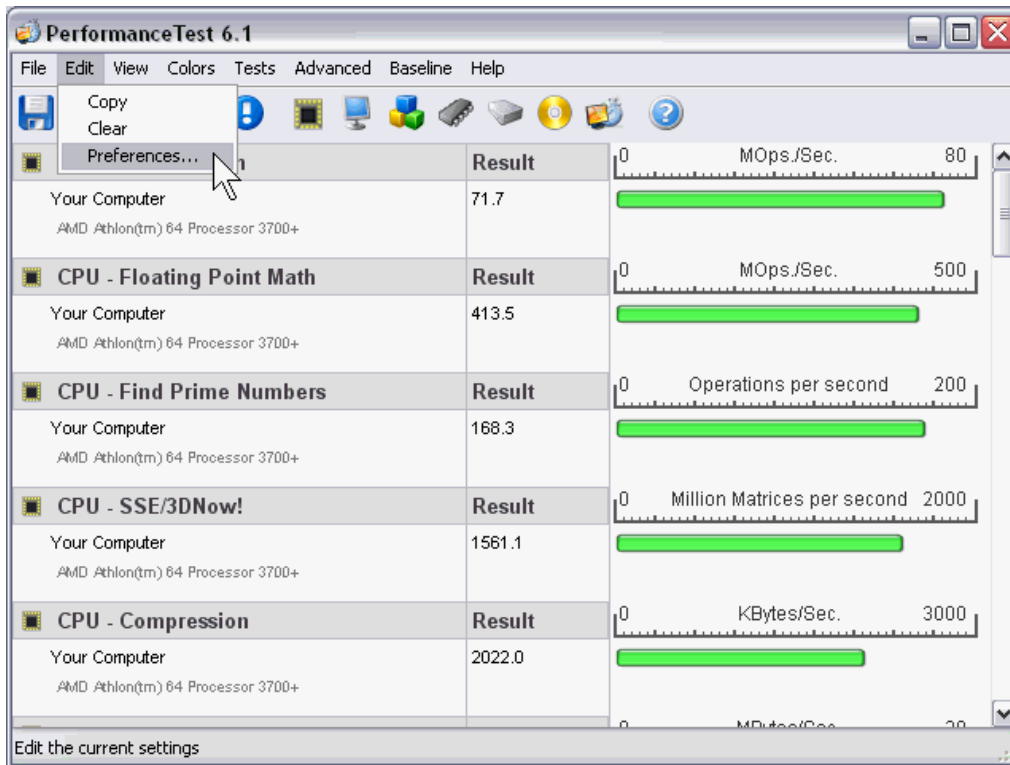


Run test Toolbar button



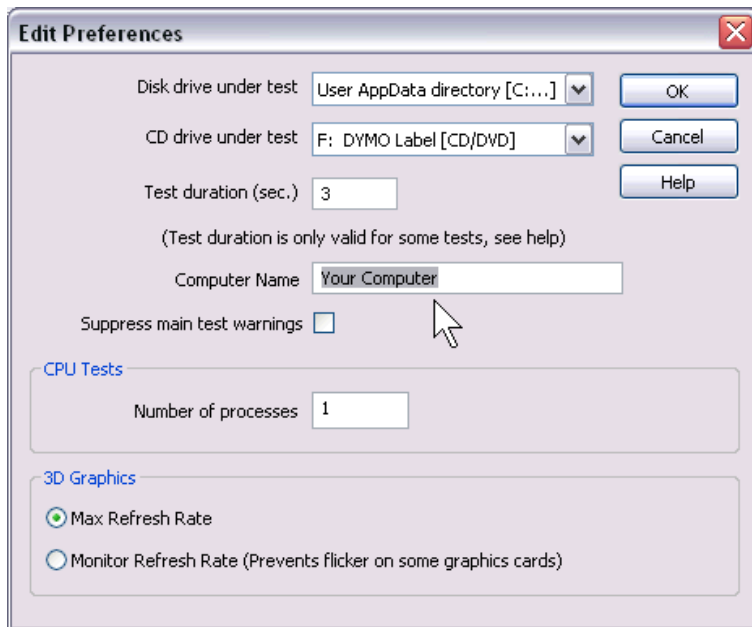
Set Preferences

After approximately 35 tests are completed, you will be presented with a screen as shown below. This screen will now be personalized for your computer. Select the drop down menu Edit and choose Preferences.



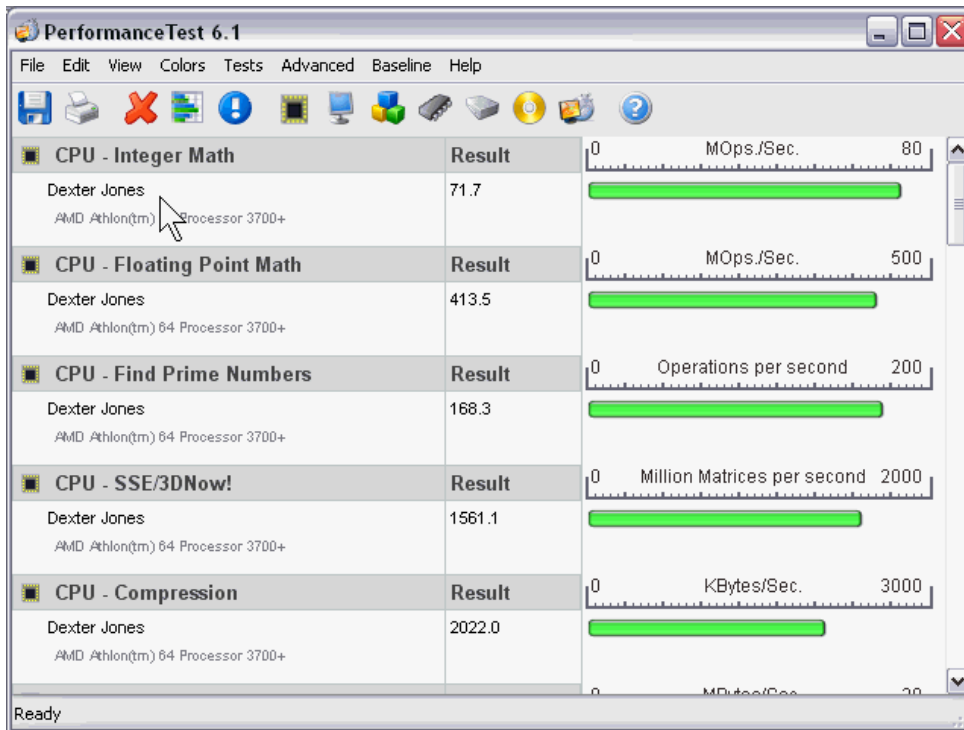
Computer Name

In the Computer Name box type your first and last name. For this example the name *Dexter Jones* was used.



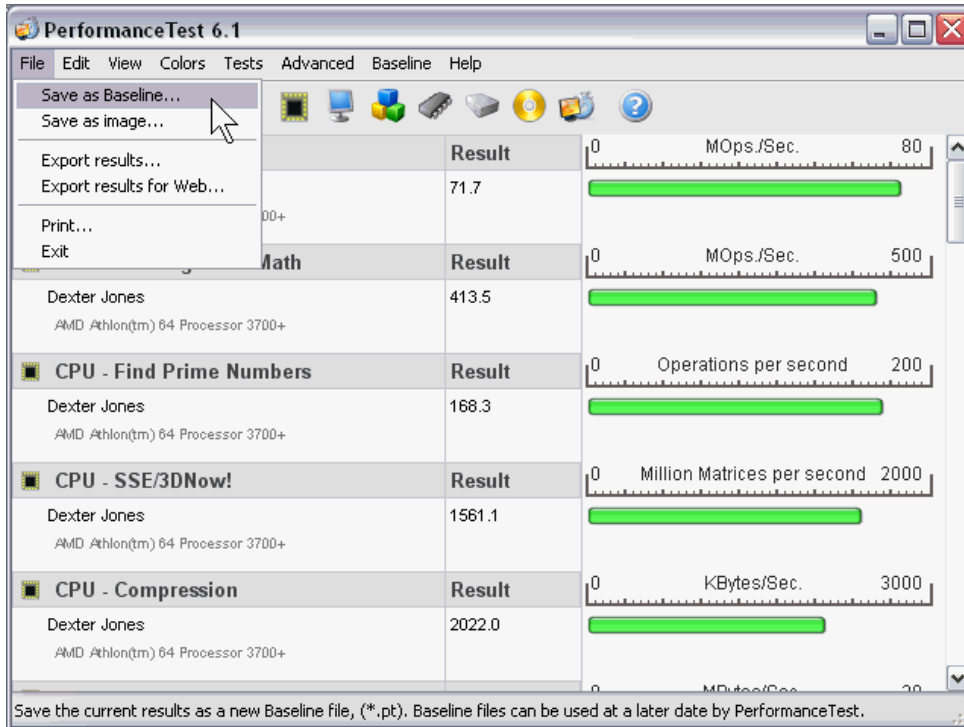
Personalized Test Results.

Now all test data will be personalized with your name. This example uses the name *Dexter Jones*.




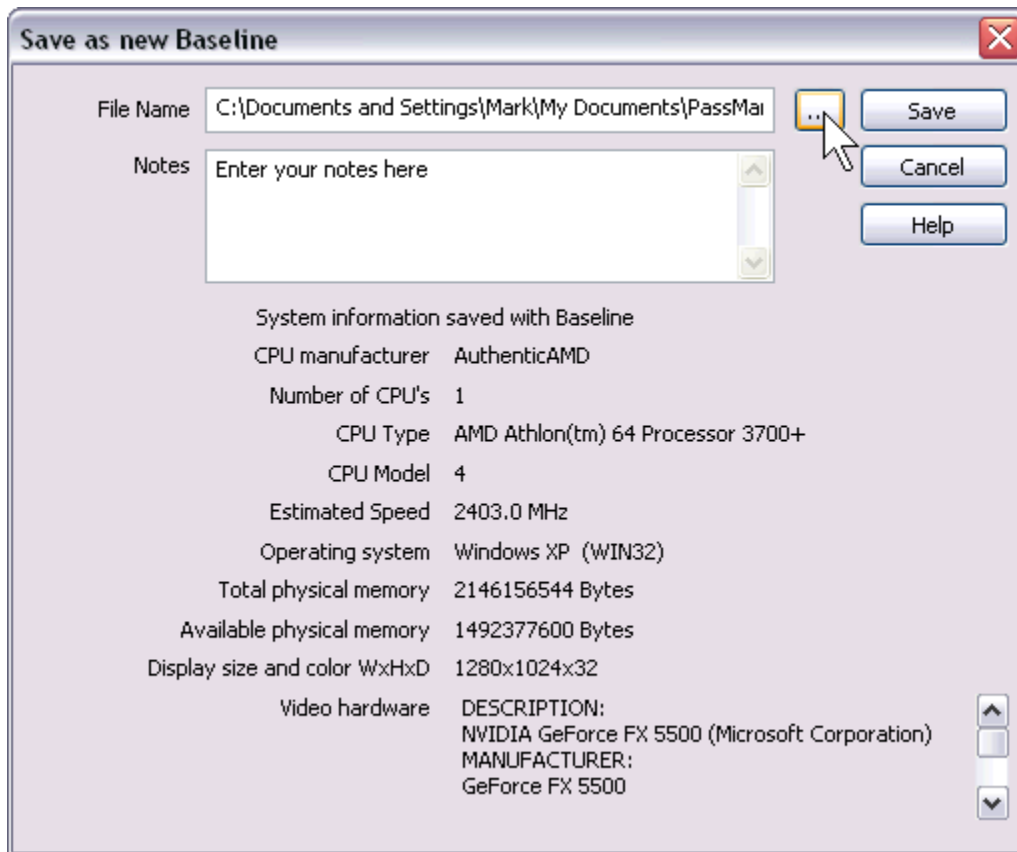
Save Test Results

The name of the test will now be saved. Open the drop down menu File and choose “Save as Baseline.”



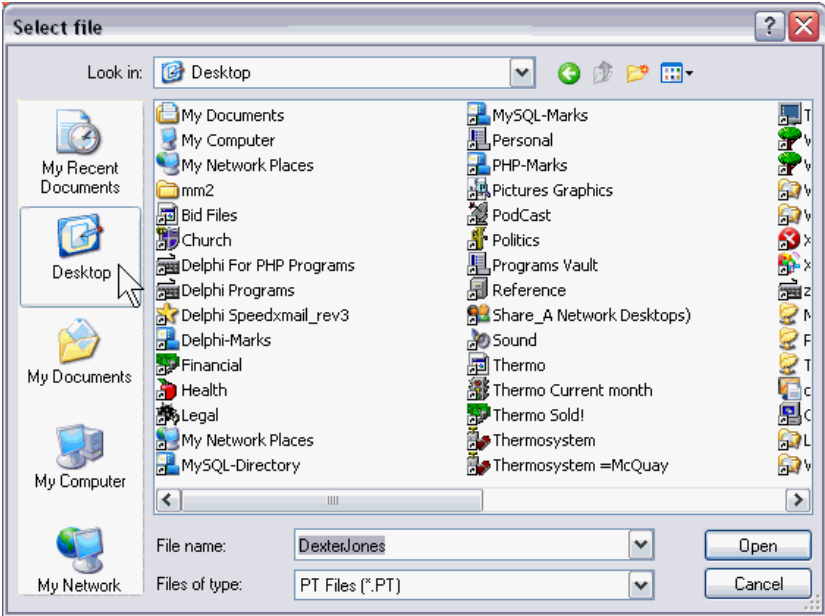
Name File

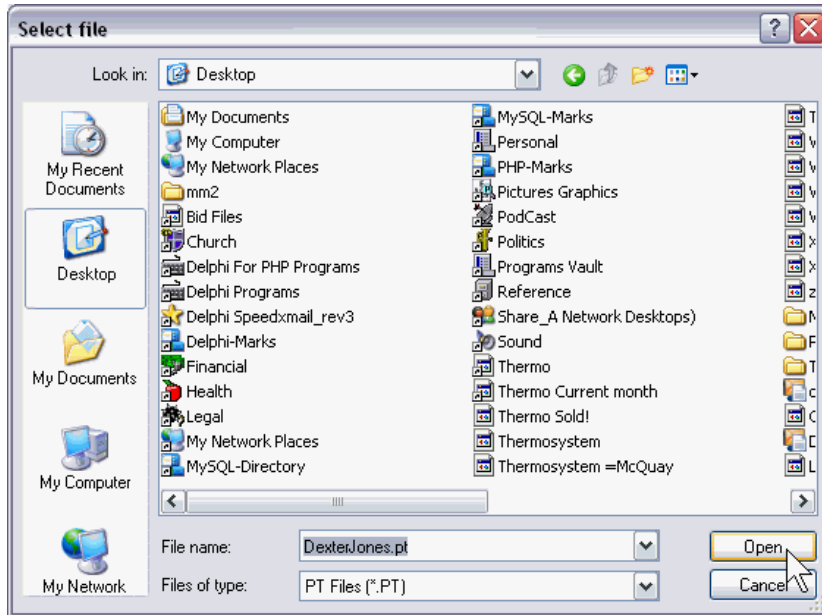
This program incorporates a two-step save process. First you must select a place to save the file by clicking the  button. A select file dialog screen will then be shown.



Save Test Results

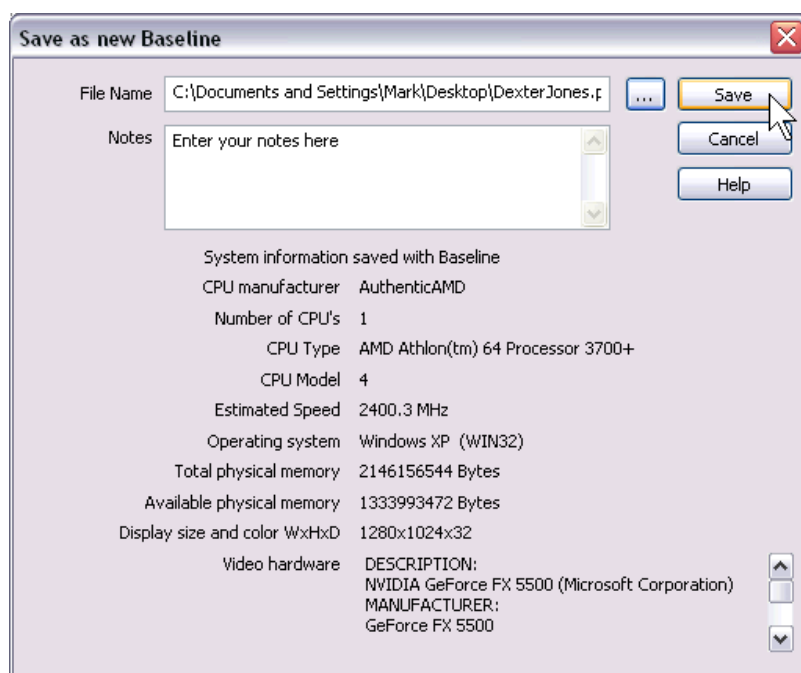
The Base-line file should now be saved to your Desktop in order to easily find it. For this example the file name is *DexterJones*. File type saved as is a *.PT file. Click the open button.





Save Test Results

The second part of this process is to save the file. Click on the Save button to save your Base-line File. The file will now be saved to your desktop.



Base-line File Saved:

Your Base-line (*.pt) file will now be saved to your desktop and will look something like this. Example name *DexterJones.pt*.



Upload Base-Line File

The next group of instructions will show how to Up-load the Base-line File to Computer Help America. Open www.ComputerHelpAmerica and select Computer Speed.

Reformat Computer - Home - Mozilla Firefox (Build 2008031114)

File Edit View History Bookmarks Tools Help

http://www.computerhelpamerica.com/

Customize Links Free Hotmail Windows Marketplace Windows Media Windows

TeamViewer Download Mozilla Firefox Start Page Reformat Computer - Home


Computer Help America

- Home
- Contact Us
- Free Analysis
- How to Reformat
- Service Price
- Service Explanation
- Computer-Profile
- Computer Health
- **Computer Speed**
- Viruses & Spyware
- Backup Tips
- Tune-up Tips
- About
- Press Releases
- Forum: Ask the Mechanic
- Authorized Area
- Links
- Site Map

"FREE" Backup Software
This software mimics

Home...

*"Like-new"
just-out-of-the-box
performance!*



Does it seem like everytime you turn around you need to buy a new computer? The old one has just gotten too slow!

Even that brand new computer you just purchased 6-months ago is not speedy like when you first plugged it in. Welcome to the computer world of disk defragmentation.



Think of reformatting like changing the oil in your car but your computer needs to have its oil changed just once-a-year. Isn't that amazing. A machine that performs all the day-in/day-out work for you yet, only requires a yearly Oil Change!!

Everyday your computer gets slower due to data continually being changed on your machine. You have two optimal solutions for speeding up your computer. 1.) Buy a new one 2.) Reformat

Why computers slow down....

It's all in the hard drive

http://www.computerhelpamerica.com/Computer_Speed.php

Upload Base-Line File

Scroll down to the Upload Passmark Baseline section.

E-mail your Speed Test For Free Comparison?

Passmark software's Free version provides a limited library of bench-mark tests. We have the complete Library of over 10,000 benchmarks at our facilities. To get a true snap-shot of how your computer compares to like machines send us your "baseline file" and we will email the result of the benchmark test to you. Instructions for uploading your baseline file.

Upload Passmark Baseline

* - required

*Name:

*E-mail Address:

*Upload File:

*Subject:

(chars left: 10000)

*Notes:

Upload Base-Line File

Fill in the Name and E-mail Address Fields. Now Click the “Browse” Button.

Upload Passmark Baseline * - required

*Name:

*E-mail Address:

*Upload File:

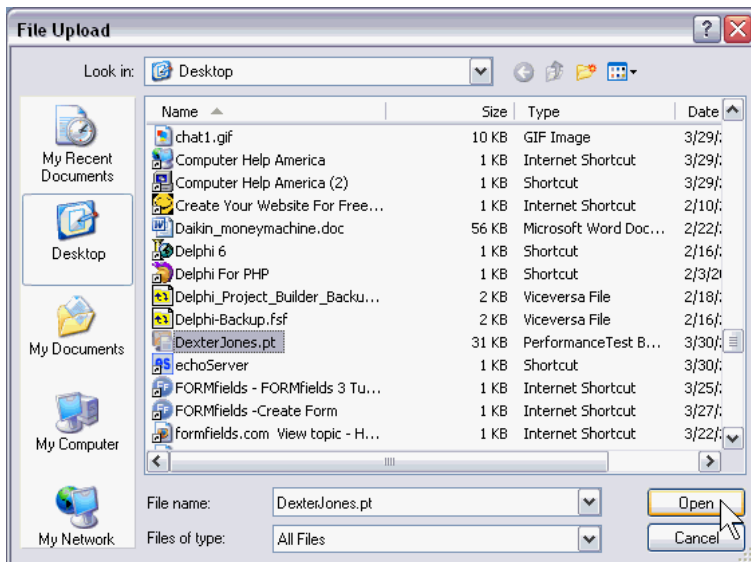
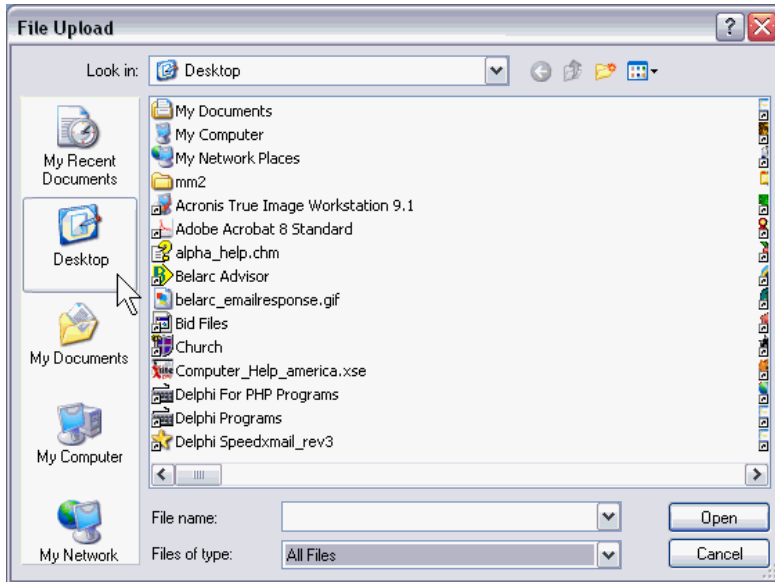
*Subject:

(chars left: 10000)

*Notes:

Open Upload PT File

Look in the Desktop. Choose your personal Base-line.pt file. For this example the name is DexterJones.pt.



Submit Form

Provide our lab with additional notes or information then click the submit button.

Upload Passmark Baseline

* - required

*Name:

*E-mail Address:

*Upload File:

*Subject:

(chars left: 10000)

*Notes:

Form Completion:

You will be asked to confirm the information. Now click the Confirm button.

Upload Passmark Baseline

Please confirm that the following data is correct:

Name: Dexter Jones

E-mail Address: diones@somewhere.com

Upload File: <http://www.computerhelpamerica.com/FORMfields/uploads/DexterJones-upload-1206911694.pt>

Subject: Computer Passmark Baseline Submission!

Notes:

Submission Complete:

Your computer profile has now been sent to Computer Help America's Lab. Please allow 48-hours for our technicians to prepare a computer performance test for you. Our suggestions will then be E-mailed back to you.

Upload Profile File

Thank you for your submission.

[Please click here if your browser does not redirect in 4 seconds.](#)

E-mail Confirmation:

An E-mail confirmation will let you know the Lab has received your report.

Thank you for contacting Computer Help America. Please expect a response within 48 hours.
Regards,

Computer Help America
<http://www.computerhelpamerica.com>